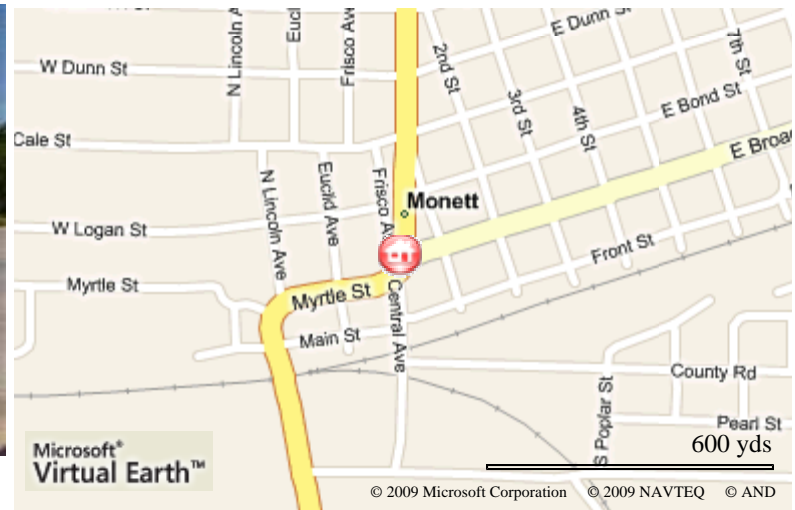


Monett

10 Broadway

Asking: \$120,000



Lot East of Building is 46 x 138 (6,348 s/f asphalt), building lot is 80 x 100. Exhaust Fan System in Kitchen area. No equipment.

MLS #	96229	# Floors	1	Type of Property	Comm
Status	ACTIVE	Type of Floors	C & W	Tenant 1	
City	Monett	Ceiling Height	8'	Tenant 1 Rent/Month	
County	Barry	Overhead Doors	No	Tenant 1 Util/Furn	
Inside City Limits	Yes	Sprinkler	Kitchen	Tenant 2	
Type	Commercial	Paved Street	Yes	Tenant 2 Rent/Month	
Occupant Type	Vacant Building	Parking	Ample	Tenant 2 Util/Furn	
Number of Units	1	Dock	No	Tenant 3	
Age (Actual)	30	Rm for Expan	Yes	Tenant 3 Rent/Month	
Year Built	1979	Office Area	Yes	Tenant 3 Util/Furn	
Lot Size	100 x 126	Kitchen Area	Yes	Tenant 4	
Total Sq Footage	5500	# Restrooms	3	Tenant 4 Rent/Month	
LPD Y/N	No	Zoning	C	Tenant 4 Util/Furn	

Schools **Monett R-I** County Taxes **2634.57** Zoned **Yes**

Directions **NW corner of Broadway & Second St.**

Sec **31** Associated Document **0**
 Rng **27** Count
 TwN **26**

CONSTRUCTION	Concrete Block	SEWER	City
ROOF TYPE	Composition	WATER	City
HEATING	Forced Air Gas	GAS	Natural
COOLING	Central Air Electric, Ceiling Fans	POSSESSION	At Closing
STORMS/SCREENS	None	TOWN	Monett
INSULATION	Unknown	HOW TO SHOW	Call Office, Vacant, Sign On Property
BASEMENT	None	ELECTRIC	City



GLENNA KRAFT
 Cell: (417) 235-4424
 glenna@ckkrealty.com
 www.ckkrealty.com
CROWN DOUBLE K REALTY
 825 HWY 60 EAST Suite A
 MONETT MO 65708
 Main: (417) 235-5231



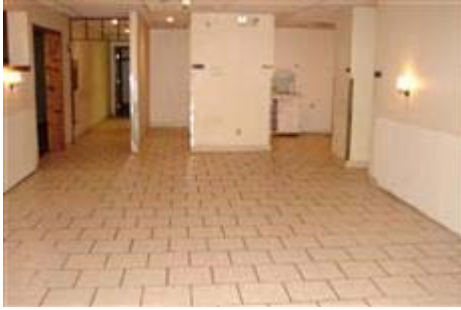
05/27/2009 02:57 PM

This information is deemed reliable, but not guaranteed.

MLS# 96229

10 Broadway

\$120,000



GLENNA KRAFT
 Cell: (417) 235-4424
 glenna@ckkrealty.com
 www.ckkrealty.com
CROWN DOUBLE K REALTY
 825 HWY 60 EAST Suite A
 MONETT MO 65708
 Main: (417) 235-5231



05/27/2009 02:57 PM